

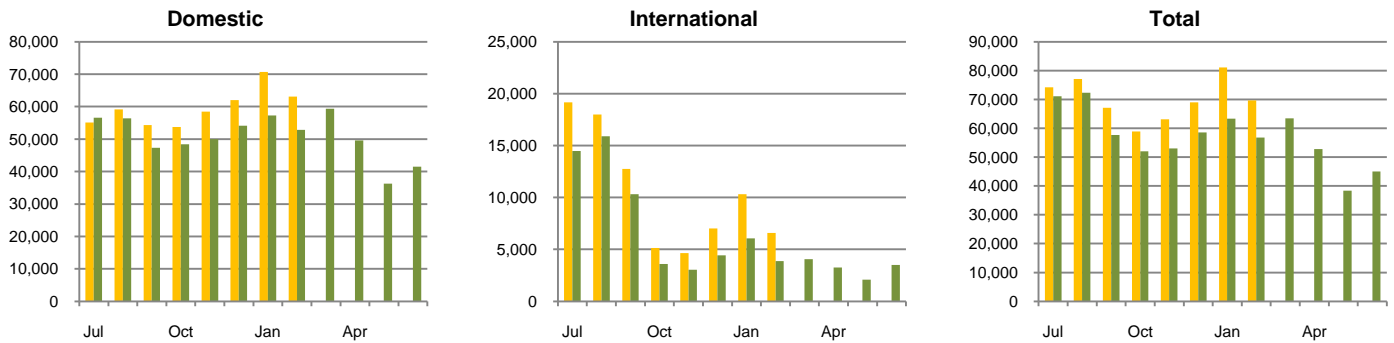
Passenger Statistics

Domestic and International Scheduled Services

Data entered to end of February, 2010

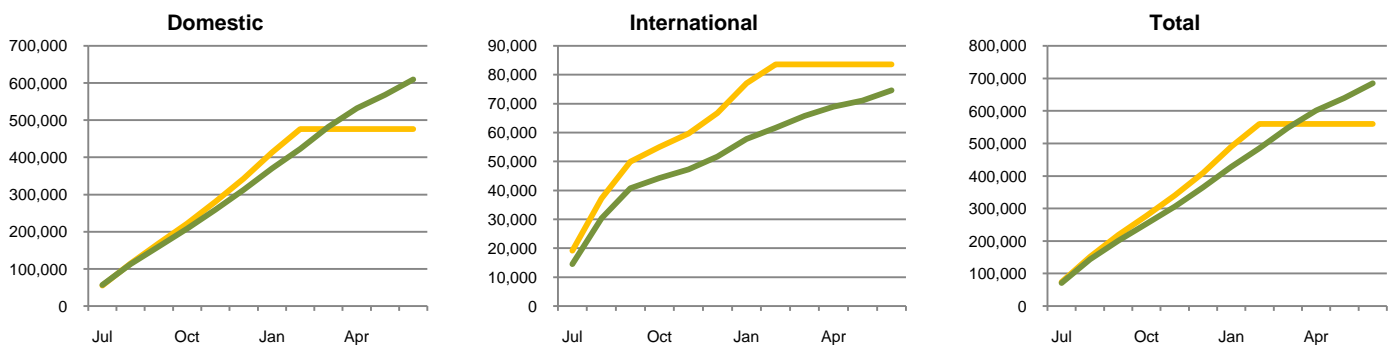


Month by Month



	Domestic		International		Total	
	Current Year	Prior Year	Current Year	Prior Year	Current Year	Prior Year
Jul	55,079	56,622	19,153	14,484	74,232	71,106
Aug	59,108	56,396	17,999	15,888	77,107	72,284
Sep	54,358	47,336	12,737	10,312	67,095	57,648
Oct	53,738	48,411	5,151	3,587	58,889	51,998
Nov	58,459	50,025	4,655	3,028	63,114	53,053
Dec	61,965	54,156	7,024	4,423	68,989	58,579
Jan	70,711	57,316	10,320	6,066	81,031	63,382
Feb	63,089	52,857	6,599	3,873	69,688	56,730
Mar		59,397		4,057		63,454
Apr		49,570		3,261		52,831
May		36,280		2,089		38,369
Jun		41,523		3,517		45,040

Cummulative



	Domestic		International		Total	
	Current Year	Prior Year	Current Year	Prior Year	Current Year	Prior Year
Jul	55,079	56,622	19,153	14,484	74,232	71,106
Aug	114,187	113,018	37,152	30,372	151,339	143,390
Sep	168,545	160,354	49,889	40,684	218,434	201,038
Oct	222,283	208,765	55,040	44,271	277,323	253,036
Nov	280,742	258,790	59,695	47,299	340,437	306,089
Dec	342,707	312,946	66,719	51,722	409,426	364,668
Jan	413,418	370,262	77,039	57,788	490,457	428,050
Feb	476,507	423,119	83,638	61,661	560,145	484,780
Mar	476,507	482,516	83,638	65,718	560,145	548,234
Apr	476,507	532,086	83,638	68,979	560,145	601,065
May	476,507	568,366	83,638	71,068	560,145	639,434
Jun	476,507	609,889	83,638	74,585	560,145	684,474